



Scuttlebutt



President's Corner

COME ONE --- COME ALL

We are promised some of the best Chili and cornbread you've ever eaten at the Club meeting on September 16th — not too hot and not too greasy. A variety of cornbread will be provided to compliment the Chili. Come hungry and leave very happy.

But wait! The Chili and cornbread are just the beginning. Each couple (or single) should bring their prize pie (or cake) to be auctioned off to raise money for the Club. This has been a real fun experience in the past. Bidding was very intense on a certain famous lemon pie but I finally prevailed. In the end, the Club was the victor.

Rodger Johnson from the Tulsa Model A Ford Club will be our auctioneer. He will be sure you enjoy the evening and that each item auctioned will bring top dollar.

Along with the pies and cakes, I understand there will also be a beautiful lady's handbag to be taken home by some successful bidder.

Don't miss out on this evening of good food, intense auction action.

Bill Jenkins, President

2008 BOARD AND COMMITTEES

PRESIDENT

Bill Jenkins

VICE

PRESIDENT & Chairman of
Activity Committee

Don Covey

ITERIUM VICE

PRESIDENT

Claude Blackwell

SECRETARY

Pat Gordon

TREASURER

Katie Owens

EDITOR

VaughnCille Weidner

DIRECTORS

Bill Harris

E-mail & Home Page

Dave Dixon

Meeting Room Arrangements

HISTORIAN

Linda Shaw

SUNSHINE

Beth Dixon and assisted by
Linda Baker

REFRESHMENTS

Ralph & Linda Baker

CLUB PATCHES & DECALS

Johnny & Helen Gentry

**Next
Meeting**

**Tuesday
September 16
7:00 PM**

**CHILI & CORNBREAD SUPPER
AND PIE/CAKE AUCTION**

JOIN THE FUN

2008 EVENT SCHEDULE

SEPTEMBER

16 7 PM Regular Club Meeting—Chili & Cornbread Dinner

DON'T FORGET TO BRING YOUR PIES AND/OR CAKES FOR THE AUCTION TO RAISE FUNDS FOR THE CLUB TREASURY.

18 6:30 PM **QUARTERLY DINING OUT— Earl's Rib Palace—920 SW 25th, Moore—793-RIBS—Exit I-35 @ S. 19th Street—go South on Service Road and cross 19th—continue South on Service Road to Earl's.**

27 8 AM **Monthly Breakfast—Jimmy's Egg—I-240 & Walker**

OCTOBER

4 9 AM **Line-up for Czech Festival Parade— Yukon (line up is on Garth Brooks Boulevard in front of the high school)**

10 AM **CZECH FESTIVAL PARADE—Lunch @ Chequers—405 N. Mustang Road (NW corner of I-40 @ Mustang Road)**

7 7 PM Board Meeting—Bill Harris' Home

17-19 **FALL FOLIAGE TOUR**

21 7 PM Regular Club Meeting

25 7:30 AM Breakfast at Bob & Joan Bordwine's—3225 Fairway Dr., Moore

9 AM Line-up for Red Ribbon Parade

10 AM **MOORE RED RIBBON PARADE—Moore, OK**

TBA Lunch after Parade at Terry & Rhonda Cavner's, 1609 SW 38th, Moore

NOVEMBER

4 7 PM Board Meeting—Vaughn Cille Weidner's Home

18 7 PM Regular Meeting—Beans & Cornbread Dinner

DECEMBER

6 TBA Stockyard's Christmas Parade/Breakfast at Cattlemen's

6 6:30 PM **ANNUAL CHRISTMAS PARTY—SEE ARTICLE**

Upcoming Events

Here are some events both Regional and National that you should put on your calendar to attend:

- September 15-19, 2008 Kansas City Touring Regional Meet, Kansas City, MO
- December 4-6, 2008 MAFCA Annual Membership Meeting, Mesa AZ

OUR REGIONAL MEETS SET FOR THE NEXT FEW YEARS

- 2008 Kansas City, MO, September 15-19, 2008
- 2009 Breckenridge, CO, June 14-19, 2009 (www.coloradohighcountrytour.com)
- 2010 Omaha, NE, June 2010
- 2011 Desota, KS, June 2011

SEPTEMBER BIRTHDAYS

Roger Johnson	1
Shirley Amend	2
Ilona Begley	2
Carolyn Kirk	9
Jerry Amend	11
Charlene Sloan	16
Bob Ramey	22
Linda Mellage	24
Bob Bordwine	25
Pat Gordon	26



NEW MEMBER

Gerald & Linda Starr
 2642 Brentwood Drive
 Norman, OK 73069 - 405-321-4816
 1931 Town Sedan
 E-mail: gstarr@pilgrime.us

ROSTER CHANGE

Change Carl & Lois Coffman's e-mail to:
ccoffman@hughes.net

SUNSHINE REPORT

Our Sunshine Lady, Beth Dixon, has been ill the past couple of months.

Linda Shaw has also been under the weather for awhile.

Let's keep these ladies in our prayers.

SEPTEMBER ANNIVERSARIES



I did not have any members that are having anniversaries in September.



He's coming and will be here before we know it
WILL YOU BE READY!!!

We will be kicking off the Christmas spirit at our club's Annual Christmas Party—make your arrangements
NOW!!!

Saturday, December 6
6:30 PM

Will Rogers Garden Center
3400 N. W. 36th, OKC

Catered by: End O'Main
(same as last year)

Cost: \$15.00 per person

Reservations and payment must be made by October 21 meeting to reserve your spot.

50 reservations are required by caterer.

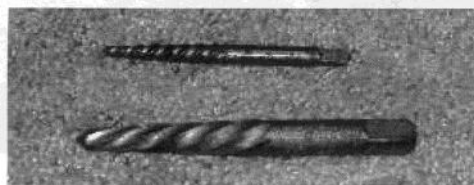
.TOOLS FOR REMOVING BROKEN BOLTS AND STUDS

EZ OUT STUD EXTRACTORS have been around for at least 50 years and, although, they are sometimes useful in extracting broken off bolts, they are usually very difficult to use to achieve the desired task. The spiral design is supposed to bite into the walls of a pilot hole drilled in the broken bolt. It is wound left handed so it should bite in to the walls and turn the broken piece right out. Depending on the degree of rust and corrosion it has been very unsuccessful for this writer. If it is a large part that can't be drilled on a press then you have no choice but to drill the pilot hole with a hand drill. Then it is very difficult to keep the hole centered. When the **EZ OUT** is inserted and turned, it will often swell the stud in the hole which brings negative results. One co-worker used to question why they call them **EZ OUT**, when there's nothing easy about it. A spoof that we read on Google describes them as, "tools that snap off in bolt holes and are 10 times harder than any known drill bit".

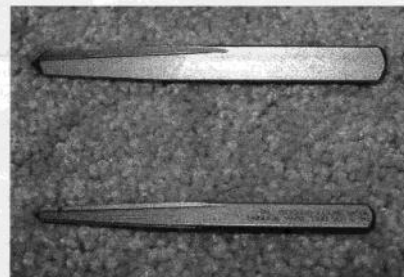
Another tool to achieve the same results hasn't been around near so long and many laymen and hobbyists aren't aware of their existence. Simply called **SCREW EXTRACTORS**, they are square with a square tapered tip. All four edges of the tip have an undercut flute. When the extractor is tapped into the pilot hole it has four sharp corners to bite into the stud and does not have the tendency to swell the bolt. I have had much better results with this device then the so called **EZ OUT**. These extractors usually work well to remove broken bolts from the flywheel where the pressure plate attaches. For head studs broke off in the Model A engines, these usually won't work because of corrosion and the stud will often have to be drilled out.

As far as procurement is concerned, the **SCREW EXTRACTORS** are available at many outlets including Ace Hardware, Sears and True Value Hardware stores. They can be purchased individually for under \$3 each or in sets. The Craftsman set pictured contains a set of five that covers sizes 1/4" thru 5/8". This set was \$12.99 which was the best price we found. Most outlets sell both the **EZ OUT** style and the square style. Believe it or not they are all American made. RG

(This article was in the Volume 23 Issue 2 of the Wichita "Rumbleseat Review")



Early technology E-Z OUT



Square shank on the SCREW EXTRACTOR doesn't "swell" the broken bolt



← Craftsman set of 5, is \$12.99



Obsolete & Classic Auto Parts
PARTS FOR FORD CARS & TRUCKS
 8701 South I-35 • Oklahoma City, OK 73149
 405-631-3933 • 1-800-654-3247 • Fax: 405-634-6815.
www.classicautoparts.com

Doesn't your project deserve THE BEST?



For nearly 50 years, car owners have trusted LeBaron Bonney to provide first quality kits and parts for their restoration projects. We know cars and we know that product fit is critical to your antique restoration. We offer interiors, tops, and accessories for Model A and other Ford vehicles (1928-1962). Contact us today for a FREE literature package for your model and a FREE copy of our latest Parts & Accessories Catalog. Your car will be happier for it!

1-800-221-5408
www.lebaronbonney.com

UPHOLSTERY KITS • PANEL SETS • CARPETS • TOPS • FABRICS
 TOP ASSEMBLIES • HEADLINERS • PARTS & ACCESSORIES

LeBARON BONNEY
Company

MOORE-NORMAN OVERHEAD DOOR

Garage Doors/Openers • Attic Stairs
 Sales • Installation • Service
 Serving All of Central Oklahoma

(405) 799-9214 315 S.E. 4th St.
 Moore, OK 73160

AL Davidson Bus: 381-2119
 Marie Davidson Cell: 274-6809


AL'S
AUTOMOTIVE MACHINE SHOP
 306 S. Cemetery Rd., Tuttle, OK 73089
 RODS AND MAINS REGROUND IN CAR
 REBABBIT RODS AND MAINS

REBORING  CRACK REPAIR
 PIN FITTING VALVE WORK

Snyder's
ANTIQUA AUTO PARTS
 12925 Woodworth Rd. New Springfield, OH 44443
Specializing in 1909-27 T and 1928-31 A Fords

FREE fully illustrated catalog *Servicing the
 Hobby for 50 Years!*
\$10.00 outside the U.S., Canada, & Mexico

Toll Free Ordering (888) 262-5712 or FAX (888) 262-5713
 For technical info (330) 549-5313 or FAX (330) 549-2211
 Order On-Line @ www.snydersantiqueauto.com



B & B Model "A" Parts
 1 Blk. North of S.E. 15th and Anderson Rd. Turn East

KEN BEGLEY ILONA BEGLEY
 Home 769-2871 12360 MaxLane
 Cell 740-7812 Choctaw, OK 73020
E-Mail: bandbmoda@cox.net

STATE FARM
 INSURANCE COMPANIES
 HOME OFFICES: BLOOMINGTON, ILLINOIS



CAVNAR INSURANCE AGENCY, INC.
 Terry Cavnar, Agent
 317 SE 4th Street
 Moore, OK 73160

off.: 405.793.1572 • fax: 405.793.1598

Michael Neal Papin
Automotive Specialist

JMC Company Professional Center
 405/341-7221 1424 South Fretz Avenue
Edmond, OK 73003

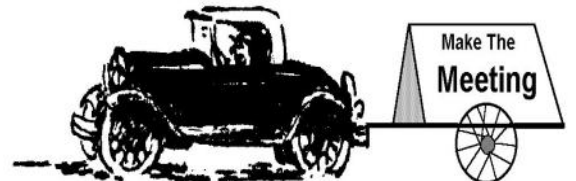
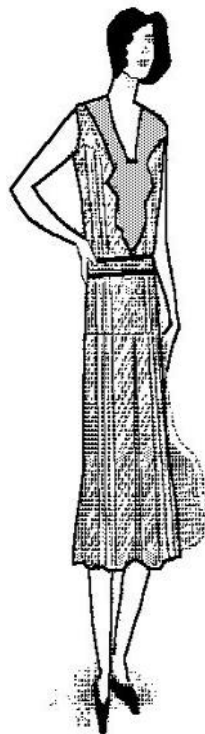
PROPOSED SLATE OF OFFICERS FOR 2009

President	Dewayne Owens
Vice President	Laurie Morris
Secretary	Pat Gordon
Treasurer	Katie Owens
Editor	VaughnCille Weidner
Directors	Dan Morris
	John Dietrich



**1909-48
Model A
FORD
parts &
accessories**

Gaslight Auto Parts
800.242.6491
www.gaslightauto.com
full catalog online or by request



1606 BACK ACRE CIRCLE
MOUNT AIRY, MD 21771

BRATTON'S
ANTIQUE AUTO PARTS

TOLL FREE
Order # 800 255-1929
Fax # 800 774-1930
(U.S. and Canada Only)

Information #: (301)829-9880
Overseas fax #: (301)829-9881

- ~ Our catalog contains over 3,200 Model A parts, each with a FULL description and illustration.
- ~ Many full page schematic drawings to help identify parts and assembly sequence.
- ~ Supplying quality by using over 90% U.S. made parts.
- ~ Serving the Model A restorer with quality parts since 1977.

**Send for a FREE 194 page illustrated
Model A catalog**

WEB: www.brattons.com

SOONER MODEL A CLUB, P.O. BOX 83192, OKLAHOMA CITY, OK 73148

The **SOONER MODEL A CLUB** is a non-profit organization affiliated with the Model A Ford Club of America. All correspondence for the club should be sent to the address above. GENERAL MEETINGS are held on the third Tuesday of the months of January thru November. Meetings commence at 7:00 p.m. and are held at Will Rogers Garden Center at 3400 N.W. 36th in Okla. City. Ownership of a Model A Ford is not required. All members are welcome to attend the club's Board Meetings, which are held on the first Tuesday of each month at a location designated by the President.

WE'RE ON THE WEB!
SOONERMODELA.COM



P. O. BOX 83192
OKLAHOMA CITY, OK 73148

Getting There Is Half The Fun

FALL FOLIAGE TOUR INFORMATION

DATE: October 17 - 19, 2008
PLACE: McAlester, OK
HOTEL: Holiday Inn Express
1811 Peaceable Road
(918) 423-1118 or 1-800-465-4329

ROOM COST: \$99 for a double—plus 13% Tax

ACTIVITIES:

Friday afternoon—Leave hotel about 2:00 PM and drive to Wilburton to tour Packard car museum at Woolridge Ranch and have free Hamburger/Hotdogs for dinner.. This is a pre-registration cookout for the Saturday Car Show at Lake Carlton.

Saturday morning — Tour to Wilburton for car show/crafts and food at Robber's Cave National Park.

Saturday evening — Reservations at Giacomo's Italian Restaurant.

Return home Sunday morning.

Rooms are blocked off until September 19. The hotel has a free complimentary breakfast. The hotel is less than two years old. Several interesting things to see in and around McAlester should you choose not to go to Wilburton. Local restaurants are many, varied and reasonable